



# 江苏鸿光杆塔有限公司

## Jiangsu Hongguang Steel Pole Co., Ltd

### 1. **PRODUCT NAME:** 10-750KV Hot Dip Galvanized Electrical Power Substation Steel Structures for Power Transformer Substation

### 2. **GENERAL INFORMATION**

Brand Name:	JSHG
Model Number:	HG-SS-10-750KV
Certification:	ISO/CNAS/IAF/CA
Place of Origin:	China

### 3. **ATTRIBUTE**

Product Name	Galvanized Electrical Power Substation Steel Structures	Application	Electrical Power Transformer Substation
Voltage Grade	10KV-750KV	Material	Hot roll steel Q235, Q345, Q420, Q460, Gr.50, Gr.65, SS400, etc.
Shape	Round / polygonal / Conical / Tubular / Tapered	Appearance Treatment	Hot-dip galvanized / Painting
Connection Structure	Overlap / Flange connection	Welding	According to AWS D 1.1, CO <sub>2</sub> welding or submerged arc auto methods

### 4. **COMMERCIAL TERMS**

Minimum Order Quantity:	One 40 HQ Container
Price:	negotiation
Payment Terms:	L/C, T/T or Western Union
Supply Ability:	3,000pcs per month
Delivery Time:	2 weeks per container after PO/drawing/prepayment confirmed
Packaging Details:	* Covered by Plastic Wrap or Mat or according to client's requests. * The Loading Pcs of Each Container could be calculated according to client's specification and data.

### 5. **PRODUCT INTRODUCTION**

#### **10-750KV Hot Dip Galvanized Electrical Power Substation Steel Structures for Power Transformer Substation**

#### **Specifications:**

Products	<ul style="list-style-type: none"><li>10-750KV Hot Dip Galvanized Electrical Power Substation Steel Structures</li></ul>
----------	--



# 江苏鸿光杆塔有限公司

## Jiangsu Hongguang Steel Pole Co., Ltd

Application	<ul style="list-style-type: none"><li>• Electrical Power Transformer Substation</li></ul>
Voltage Grade	<ul style="list-style-type: none"><li>• 10~500KV (10KV, 13.8KV,33KV, 35KV, 66KV, 110KV,132KV, 220KV, 230KV, 330KV, 500KV or Others )</li></ul>
Shape	<ul style="list-style-type: none"><li>• Conical, Round, Polygonal (Octagonal, Dodecagonal, Hexadecagonal, etc),Tubular, Tapered</li></ul>
Material	<ul style="list-style-type: none"><li>• Hot Roll Steel Q235, Q345, Q420, Q460, ASTM A527 A36, GR50, GR65, ST-37, ST-44, ST-52, S355JR, S355J2G3, SS41, SS50, SS55 and others equivalent steel material</li></ul>
Wall thickness	<ul style="list-style-type: none"><li>• 2~30mm</li></ul>
Once Forming	<ul style="list-style-type: none"><li>• 16m Once forming without joint</li></ul>
Welding	<ul style="list-style-type: none"><li>• Welding complies with AWS D1.1 standard.</li><li>• CO2 welding or submerged arc auto methods</li><li>• No fissure, scar, overlap, layer or other defects</li><li>• Internal and external welding makes the pole more beautiful in shape</li><li>• If customers need any other requirements of welding, we also can make adjustment ad your request</li></ul>
Joint	<ul style="list-style-type: none"><li>• Joint with insert mode, flange mode.</li></ul>
Base plate	<ul style="list-style-type: none"><li>• Base plate is square/round/Polygon with slotted holes for anchor bolt and dimension as per client's requirement.</li></ul>
Galvanization	<ul style="list-style-type: none"><li>• Hot dip galvanization in accordance with Chinese standard GB/T 13912-2002 and American standard ASTM A123.</li></ul>
Painting	<ul style="list-style-type: none"><li>• According to clients' request</li></ul>
Life Period	<ul style="list-style-type: none"><li>• More than 25 years, it is according to installing environment</li></ul>
Advantages	<ul style="list-style-type: none"><li>• Short Construction Cycle</li><li>• Low Overall Cost</li><li>• Easy Installation and Maintenance</li><li>• Weather Resistance</li><li>• Anti-corrosion</li><li>• More than 15 Years Design &amp; Manufacture Experience</li><li>• Capable to Handle Volume Orders</li><li>• Provide Professional Design by Our Experienced R&amp;D Engineers</li><li>• Rich Exporting Experience</li></ul>



# 江苏鸿光杆塔有限公司

Jiangsu Hongguang Steel Pole Co., Ltd

- ODM, OEM Acceptable
- Technical Support by E-mail



## Description:

The electrical substation steel structure is the main load supporting structures of substation, so its quality has direct relation with the safety and reliability of power grid operation.

Our company has 16 years' manufacturing experience as well as advanced equipment, excellent technical staff and mature technology, which will assure the welding quality of steel structures, the galvanization quality and the firmness. Meanwhile, we have a whole set of quality test equipment to determine the physical properties and sizes of all steel structures, ensuring the desirable quality of the whole electrical substation structures.

The surface of all steel structures for constructing the substation could be treated by anti-corrosion techniques, such as hot dip galvanization, powder coated, or painted



according to your requests. So the products are wear-resistant, corrosion-resistant and could serve as long as 50 years with less maintenance.

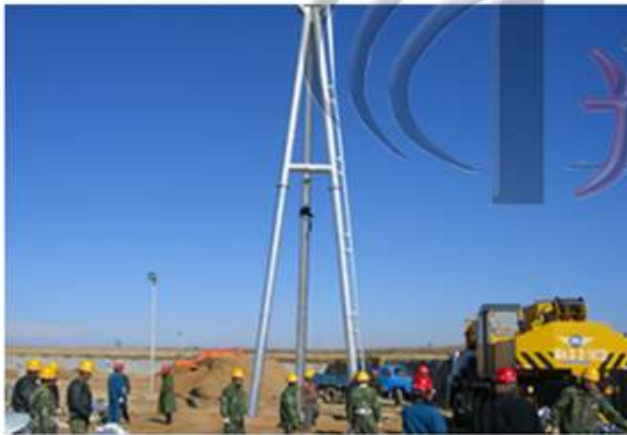
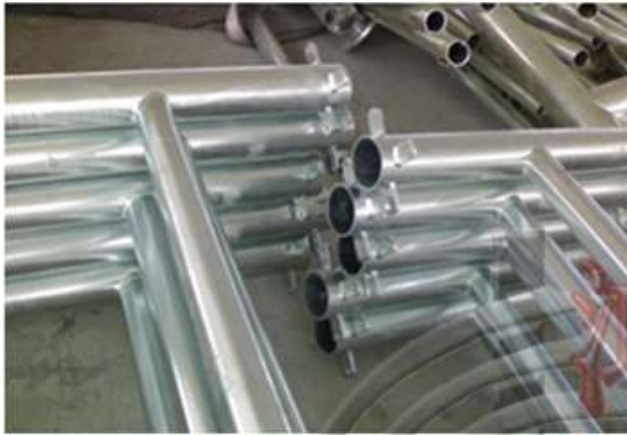
### Product Details





# 江苏鸿光杆塔有限公司

Jiangsu Hongguang Steel Pole Co., Ltd





# 江苏鸿光杆塔有限公司

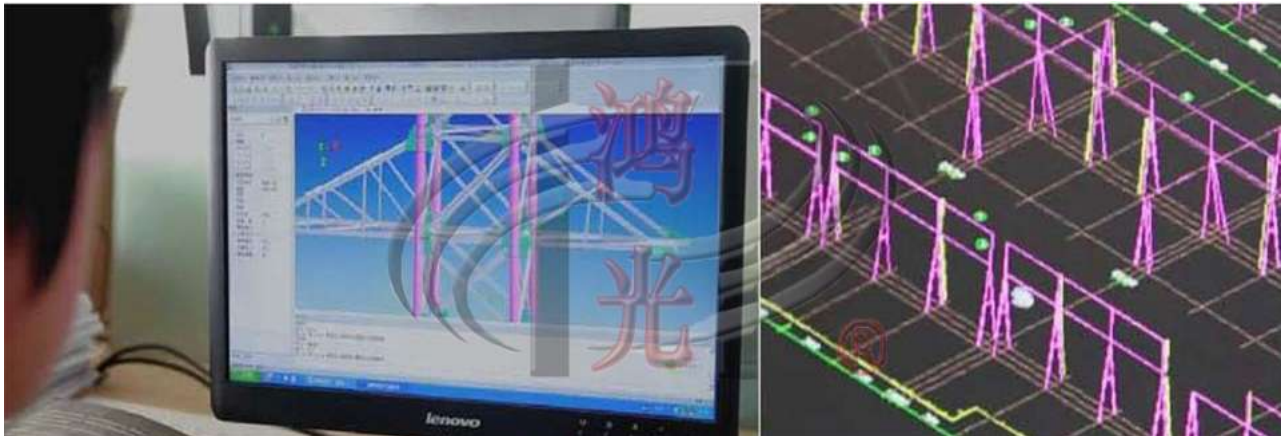
## Jiangsu Hongguang Steel Pole Co., Ltd


Installation Site





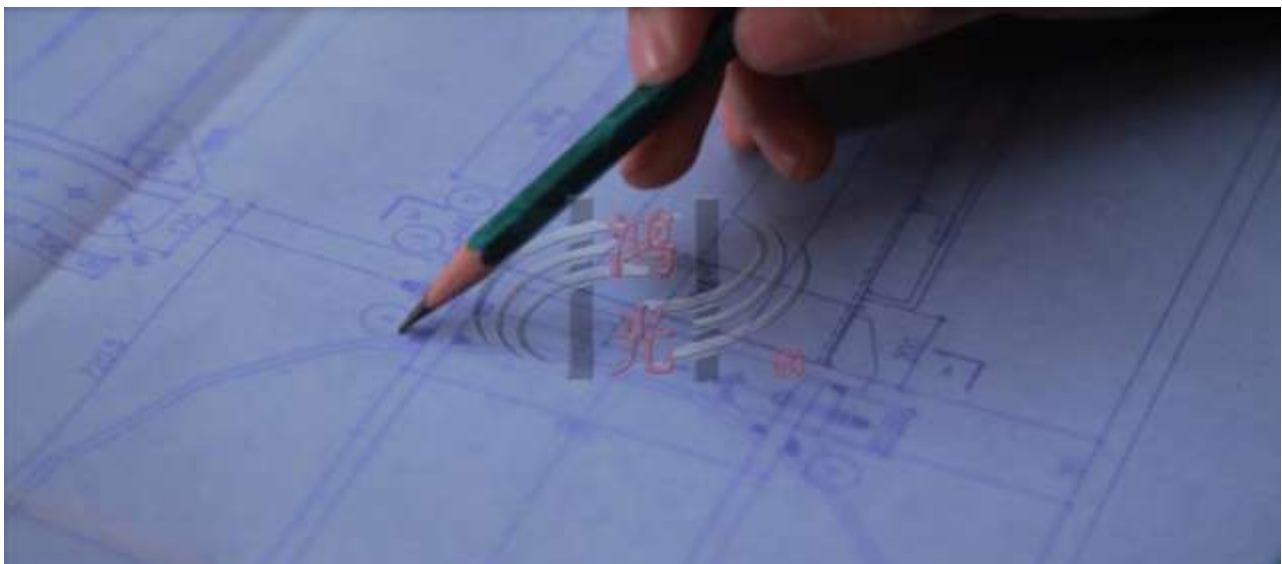
Engineering and Design Management



 Design Software

“Design and technology, professional and common, software and hardware” is JSHG’s design philosophy. We have established a close cooperative relationship with design institutions and companies in the same industry. Through close communication and explorations, our company took in advanced design concept, introducing domestic and foreign first-class design software, and attracting high-quality personnel.

In the R&D Department, there are many experienced senior research & design staff and rigid development network, which ensure our design proposals meet customer demand, even exceed their expectations.

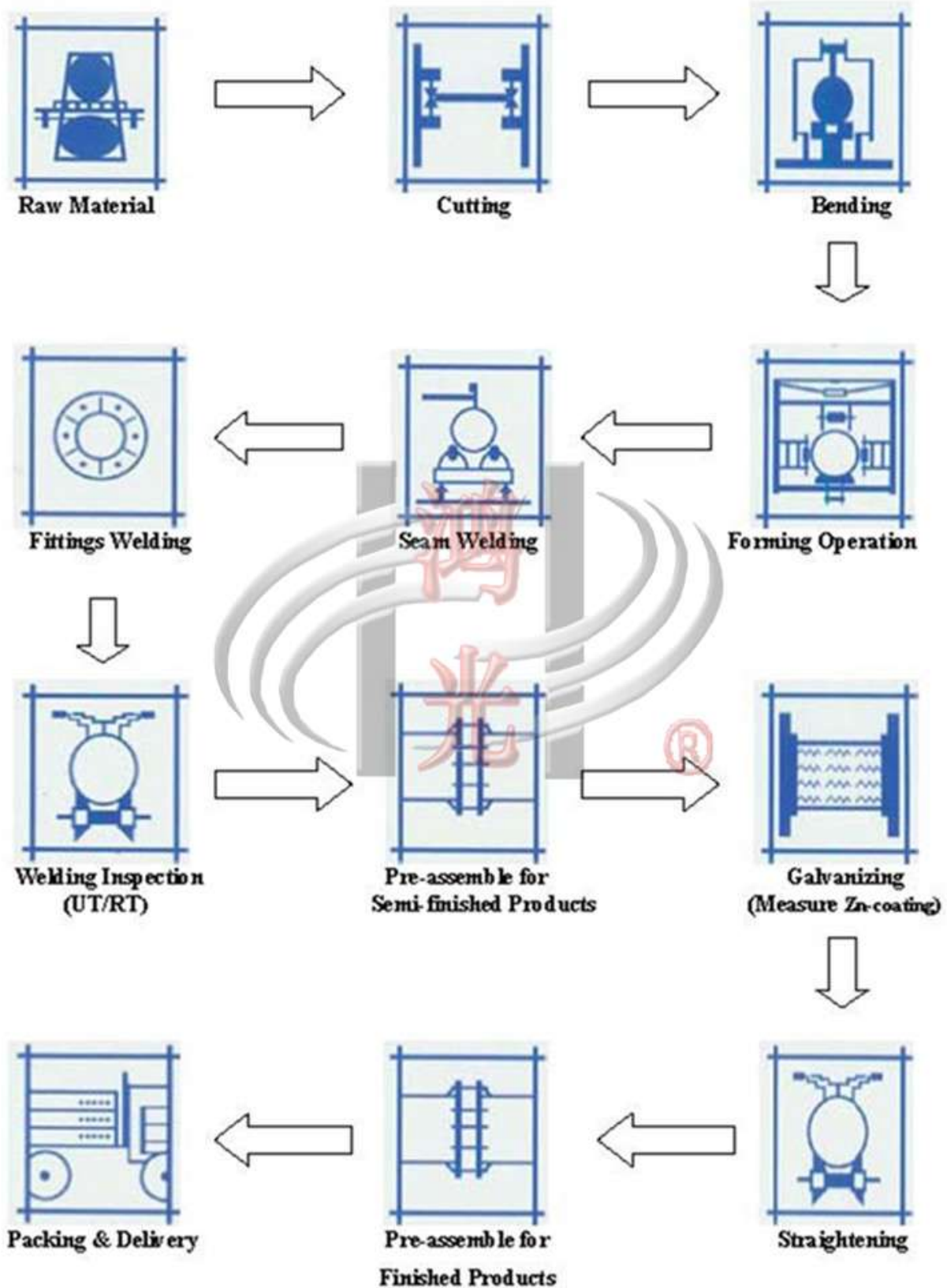


Since the establishment, JSHG have put forward thousands of conical pole design proposals covering several industries and fields, such as power transmission industry, telecommunication industry, lighting industry, etc, which provides complete and strong technical support and service assurance.



Production Process Flow Chart

PROCESS FLOWCHART







## Quality Control Management

### Quality Object

The rate of pass of steel pole, steel structure is 98%,  
Smooth installation and complete match ,  
The rate of customer satisfaction is 95%

*JSHG implements zero defect management, 5S management, and creates the Hongguang brand by excellent quality.*



*JSHG has passed the ISO9001 quality management system. Besides, it processes professional physical and chemical inspection lab and is equipped with X-ray detection system, ultrasonic detection system, screen display universal testing machine, photoelectric emission spectrum analyzer, as well as carbon and sulfur microcomputer analyzer etc.*

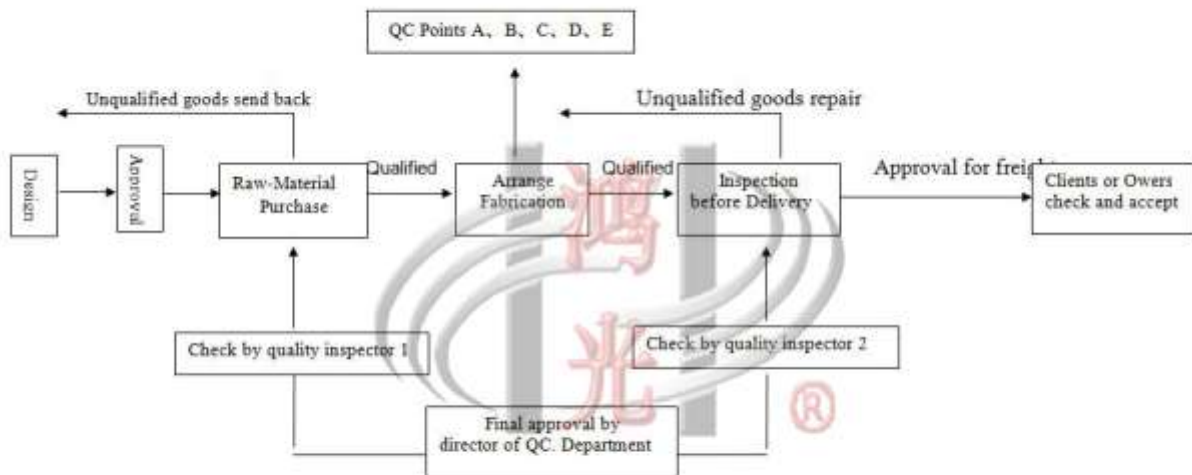
*Meanwhile, it has formed a scientific and strict quality management system, which effectively and strictly guarantees the quality control of products from raw material to finished products.*



# 江苏鸿光杆塔有限公司

## Jiangsu Hongguang Steel Pole Co., Ltd

### Production Quality Assurance System Diagram



**Remark:** The arrangement of quality control(QC) points A, B, C, D, E according to working procedure's requirements. Each of QC point with special quality inspectors, which one take charge for check finished workpieces made by previous step. Only qualified workpieces will turn into the next working procedure, the Unqualified ones have to send back to the previous step for repair. We insure that all of our products are qualified.





Packaging & Shipping





## Terms and Conditions

**1. Price Term:** EXW, FOB, CFR or CIF.

- The price includes pole shaft, base plate, cross arm and anchor bolt.
- Shipping seaport: Shanghai Seaport.
- Please provide drawings if you have so that we can calculate the accurate price for you.
- We also provide design according to your requests, if you don't have drawings.

**2. MOQ:** One 40FT Container.

**3. Payment Term:** Typically 30% by T/T as deposit, balance by T/T or L/C at sight before shipment. Other payment way can be negotiated.

**4. Delivery Time:** 2 weeks per container after PO/drawing/prepayment confirmed.

**5. Package:** Normally wrapped by plastic bags or burlap cloth at the top and bottom, or according to clients requirement.



## Our Services

- Reply within 24 Working Hours
- Factory Direct Sale
- More than 15 Years Design & Manufacture Experience
- Capable to Handle Volume Orders
- High-Quality and Low-Price Products
- Provide Professional Design by Our Experienced R&D Engineers
- Rich Exporting Experience
- ODM, OEM Acceptable
- Technical Support by E-mail
- Calling service



## Company Profile

### **JIANGSU HONGGUANG STEEL POLE CO., LTD.**

**With over 15 Years of Experience/ Capable to Handle Volume Orders**

**Exporting to Southeast Asia, Africa, Europe, Australia, the Middle East, South America, etc.**

Founded in 1998, Jiangsu Hongguang Steel Pole Co. Ltd (JSHG) specializes in manufacturing various steel structures. We manufacture a variety of products like **Electrical Poles and Substation Structures** for the power transmission industry; **high masts and street lighting poles** for illumination, which are widely used in expressways, airports, ports and docks, depots, parking lots and stadiums; **tower poles** for funicular railways; **Telecommunication Monopole Towers** for the telecommunication industry; **Traffic Poles & Camera Poles & Advertising Structures** for transportation Industry and Advertising Industry.



# 江苏鸿光杆塔有限公司

Jiangsu Hongguang Steel Pole Co., Ltd





# 江苏鸿光杆塔有限公司

## Jiangsu Hongguang Steel Pole Co., Ltd

---

### Contact Us

Jiangsu Hongguang Steel Pole Co., Ltd.

Address: Wanshi Industrial Zone, Yixing City, Jiangsu Pro., P.R.China, 214212

Telephone: +86 510 878 441 56

Fax: +86 510 878 435 28

Mobile: +86 138 615 059 69

Skype: tangjia870124

**Please feel free to contact us!**